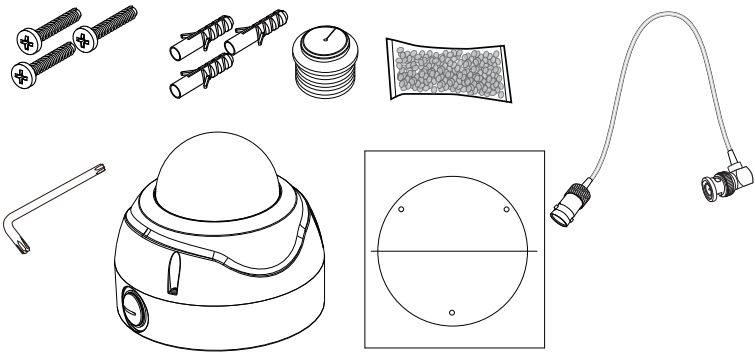


## Installation Guide

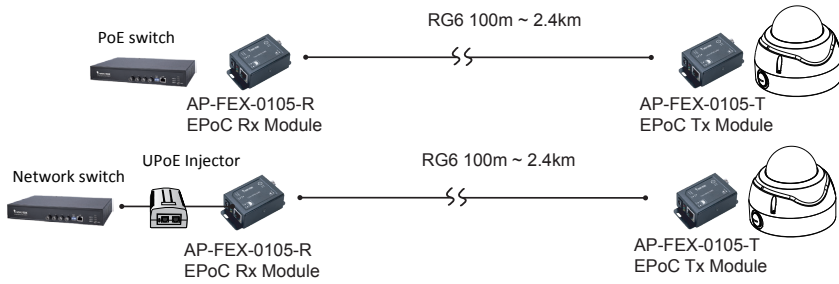
### Revision History:

Rev. 1.0: Initial release

### Package Contents



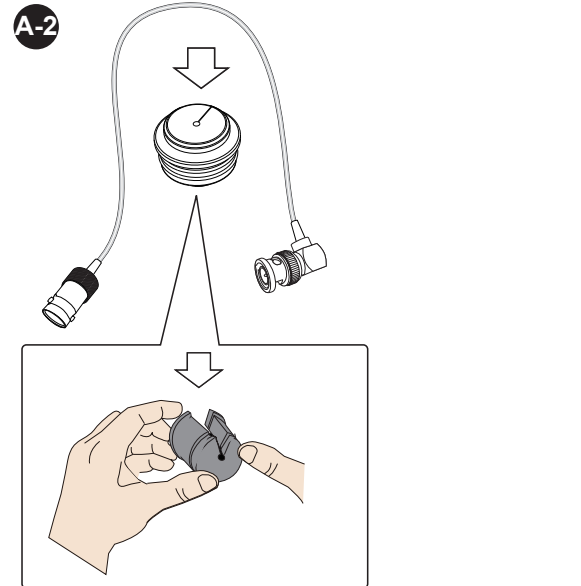
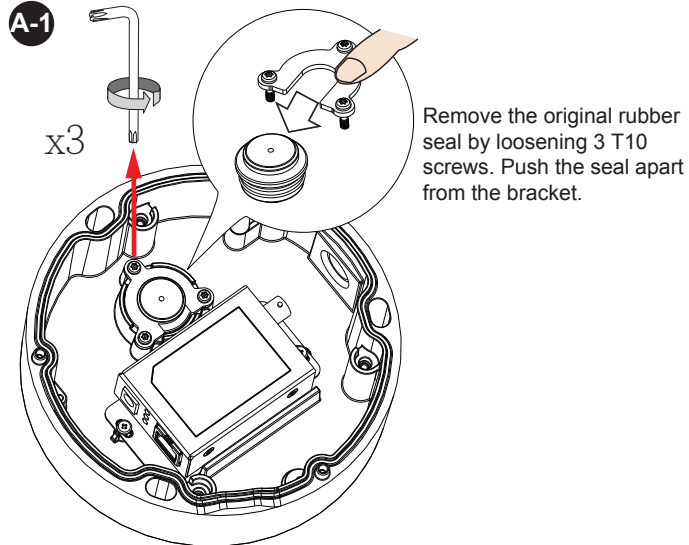
### Applications



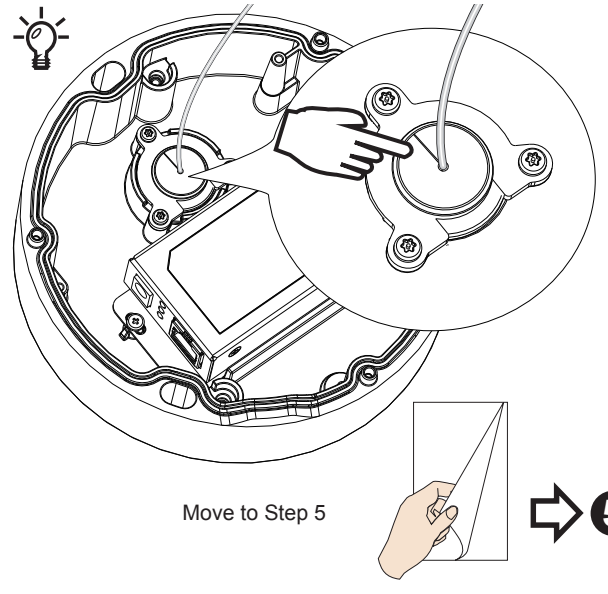
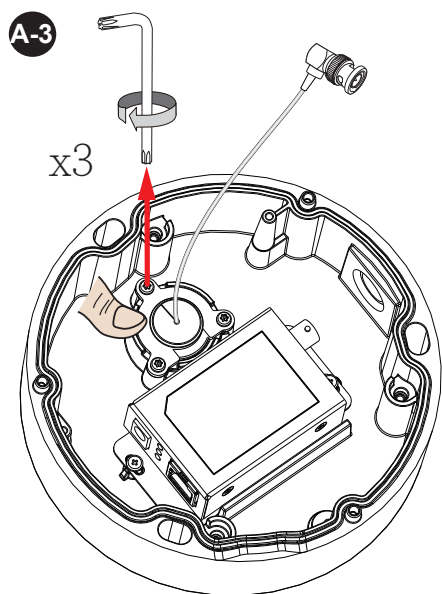
Distance/Power Chart			
AP-FEX-0105-T			
Length of Coaxial Cable	AA-420 69W	AP-GIC-011A-095 95W	
300m	26.4W	26.4W	
500m	17.48W	17.48W	
800m	12.63W	12.63W	
1000m	8.94W	8.94W	
1200m	8.48W	8.48W	
1200m ~ 2400m	[Data only (100Mbps)]	[Data only (100Mbps)]	
AP-FEX-0200-T			
Length of Coaxial Cable	AA-420 69W	AP-GIC-011A-095 95W	
100m	20W per port	12W per port	
300m	12W per port	12W per port	
500m	8W per port	8W per port	
500m ~ 2400m	[Data only (100Mbps)]	[Data only (100Mbps)]	

There are two cable routing options: **A.** through the bottom hole. **B.** through the M20 conduit hole on the side.

Open the included rubber seal grommet and pass the BNC cable through it (female to right-angle male BNC connector cable).

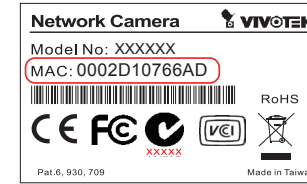


Press the rubber seal assembly into place, and tighten the 3 T10 screws.

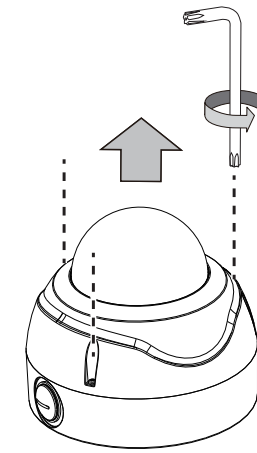


## Installation

**1** Jot down the camera's MAC address for later reference.

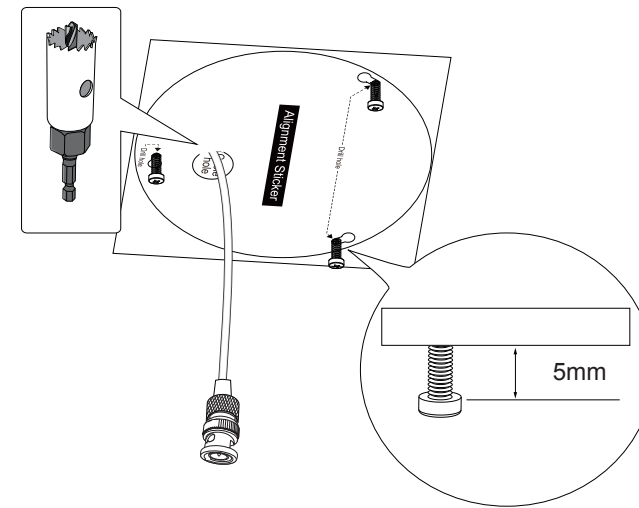


**2** Open the top cover using a T10 L wrench.

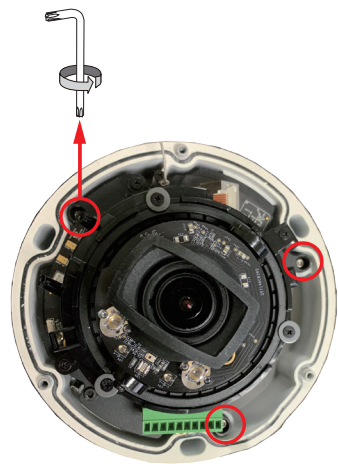


**3** Attach the included alignment sticker to a preferred position. Drill holes on the wall and if space behind the wall allows, you may also pass cables through the wall.

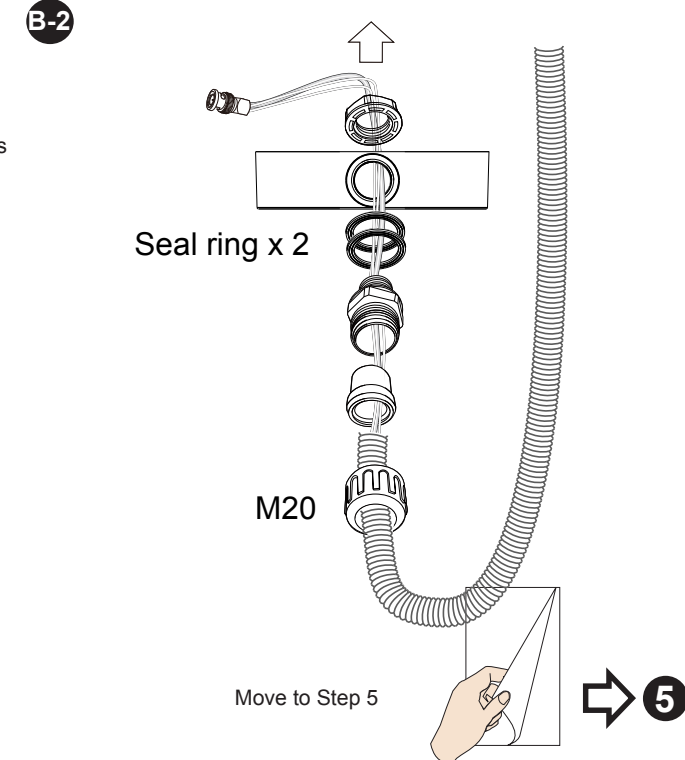
Leave 5mm of screw thread above the wall. This ensures easier installation using the camera's keyhole slots.



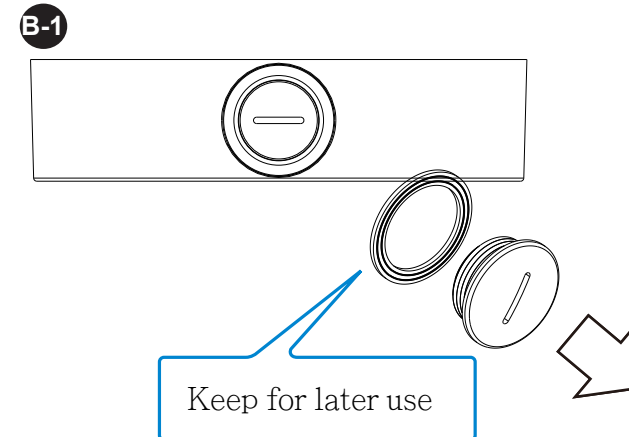
**4** Loosen the 3 T10 screws to remove the camera.



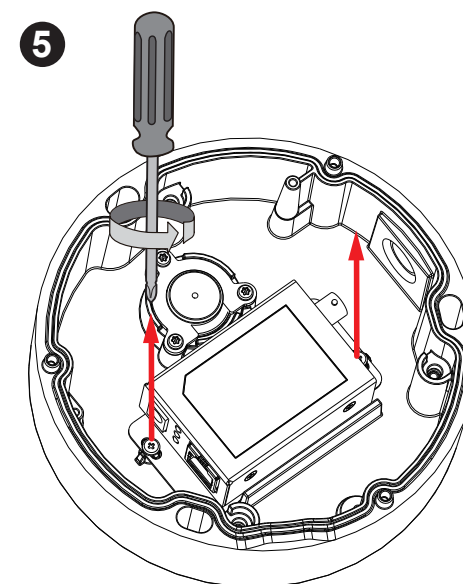
Use 2 seal rings when installing the conduit.



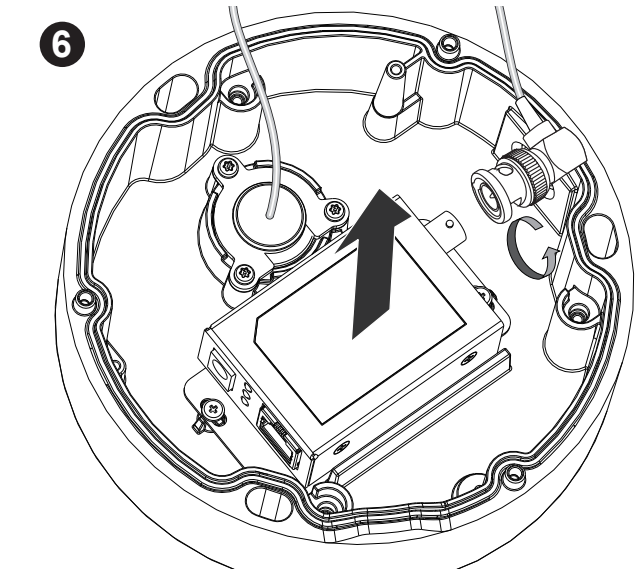
If routing through an M20 conduit, remove the plug and install the conduit. Route an RG6 coaxial cable through it. The M20 conduit is user-supplied.



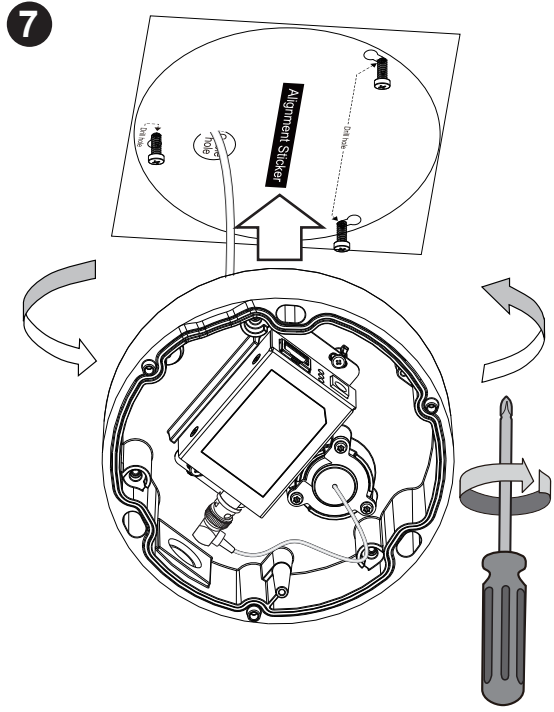
Loosen the 2 screws securing the AP-FEX-0105-T EPoC module. Lift it up a bit so that you can connect the BNC connector.



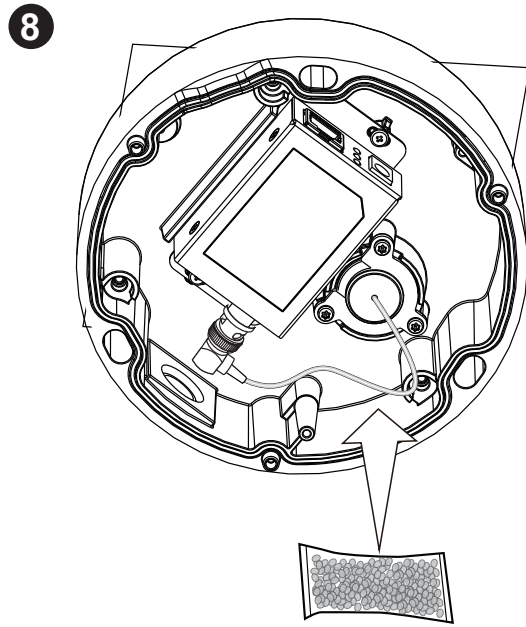
Connect the male connector on the cable to the counterpart on the module. When done, secure the module back in place.



Install the base chassis to the mounting screws you previously installed by aiming and turning counter-clockwise. When done, fasten the mounting screws.



Replace the desiccant bag placed inside the chassis.



Install the camera and top cover back to the base chassis. Please remember to attach the Ethernet cable between the camera and the module.

