

Quick Installation Guide

Rev.: 1.1

INTRODUCTION

Model	Description
AP-FEX-0150-T	EPoC Outdoor Tx Module, 1x BNC, 1x FE RJ45, -30°C~60°C, IP67, IK10
AP-FEX-0250-T	EPoC Outdoor Tx Module, 1x BNC, 2x FE RJ45, -30°C~60°C, IP67, IK10

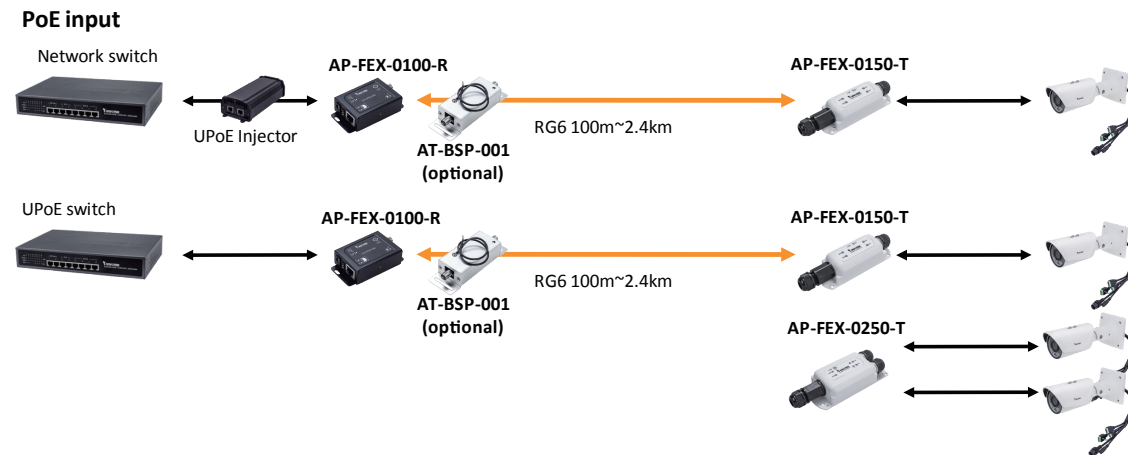
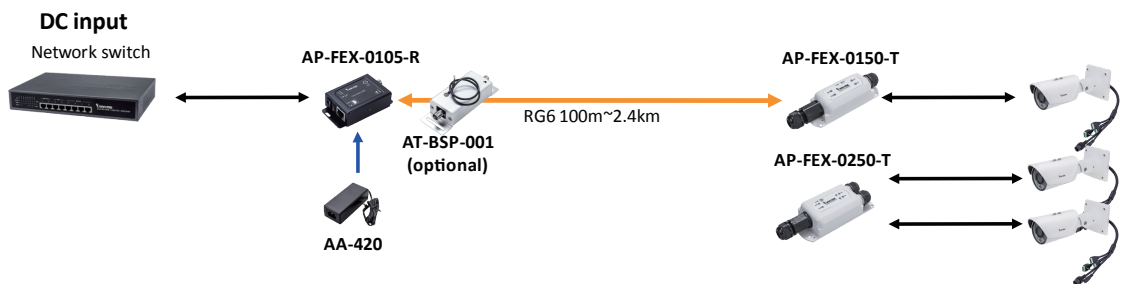
PACKAGE CONTENTS

* 1x AP-FEX-0150/0250 EPoC module	* 1x Quick Installation Guide
-----------------------------------	-------------------------------

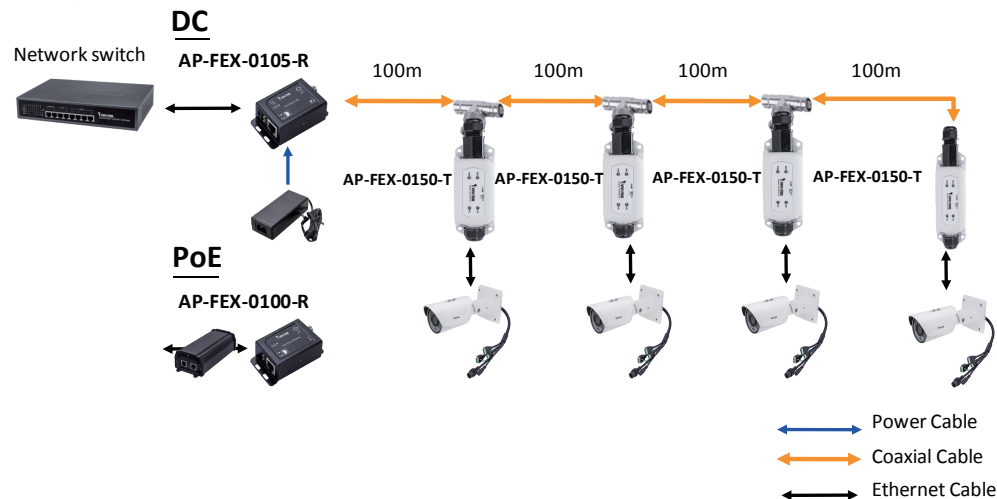
⚠ IMPORTANT:

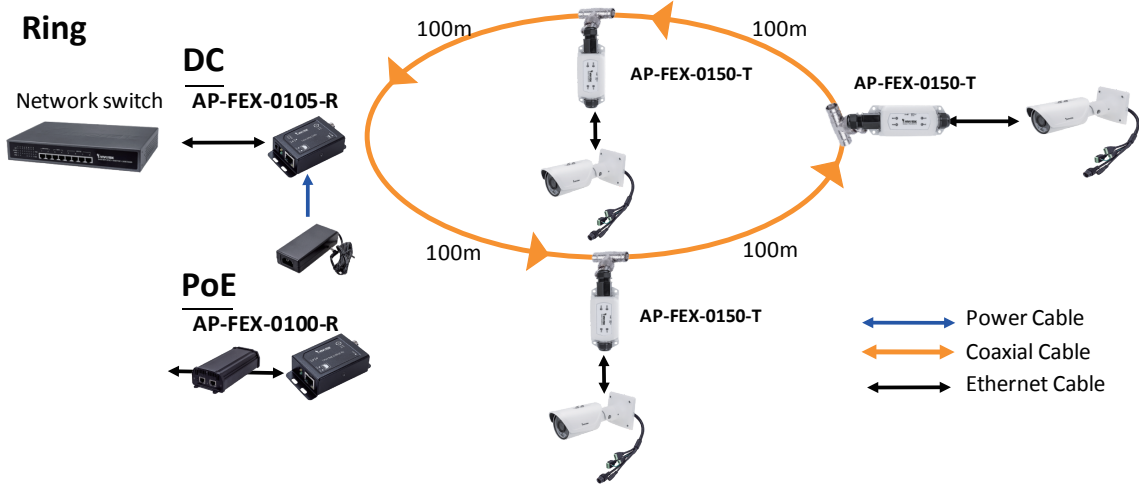
1. Use CAT5e or CAT6 UTP/STP cables and RG6 coaxial cables.
2. Please avoid using low quality cables, which will seriously limit the cabling distance and power delivery.
3. Make sure the power source is sufficient for your configuration.

CONNECTION



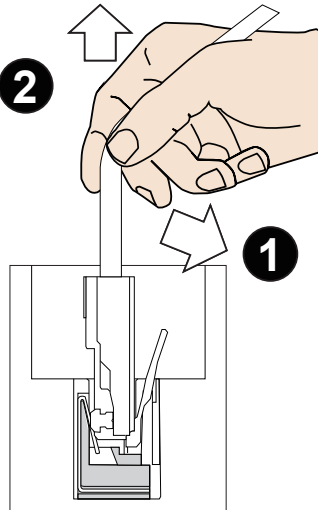
Daisy Chain





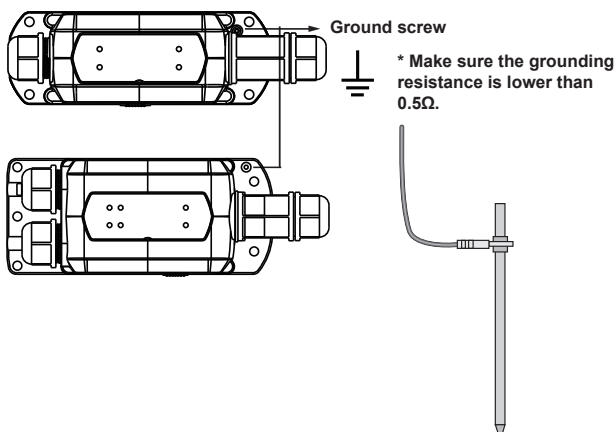
NOTE:

To disconnect a LAN cable, loosen the cable gland and pull the cable against the socket wall towards the side of the locking tab.



IMPORTANT:

The outdoor EPoC adapter and SD-301 surge protector must be grounded using a ground wire between the ground screw and earth ground.



Distance/Power Chart

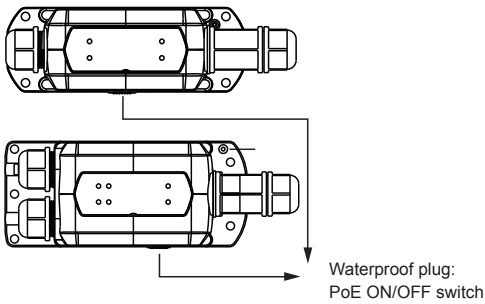
Length of Coaxial Cable	AA-420 65W	AP-GIC-011A-095 95W
300m	25.2W	18.1W
500m	17.64W	12.6W
800m	11.76W	8W
1200m	7.56W	5.1W
1200m ~ 2400m	Data only (100Mbps)	Data only (100Mbps)

NOTE:

1. The numbers comply using RG6 coaxial cables.
2. The length of network cable for camera connection is 100m CAT5e cable.
3. The power delivery will vary on the quality of coaxial cable due to resistance.

LEDs

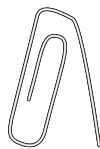
RJ45	Yellow ON	PoE: Power port is connected to PD
	Green flash	LAN: Data is being transmitted or received.
	OFF	No connection
PWR	Yellow ON	Power adapter is connected to the EPoC module
LINK	Green ON	Rx and Tx EPoC module is connected.



DIP Switch

DIP#	On	Delivering PoE output to PD.
	Off	No PoE output to PD.

Join button



Join button

**Join: Press 10 ~ 15 seconds
to restore default**



AP-FEX-0150-T



AP-FEX-0250-T

All specifications are subject to change without notice.
Copyright © 2020 VIVOTEK INC. All rights reserved.

VIVOTEK INC.
6F, No.192, Lien-Cheng Rd., Chung-Ho, New Taipei City, 235, Taiwan, R.O.C.
[T: +886-2-82455282|F: +886-2-82455532|E: sales@vivotek.com

VIVOTEK USA, INC.
2050 Ringwood Avenue, San Jose, CA 95131
[T: 408-773-8686|F: 408-773-8298|E: salesusa@vivotek.com

VIVOTEK Europe
Zandsteen 15, 2132 MZ Hoofddorp Delta Electronics
T: +31 (0)20 800 3817 | E: saleseurope@vivotek.com